



Hello everyone! I'm Faith Jones of [Fresh Lemons Quilts](http://FreshLemonsQuilts.com) and I'm very excited to share my first Fat Quarter Gang project with you today, the Fresh AG Tote.

Required Fabric

Outer Tote Body - 2 Fat Quarters {or combination of fabrics for equivalent}

Inner Tote Lining - 2 Fat Quarters

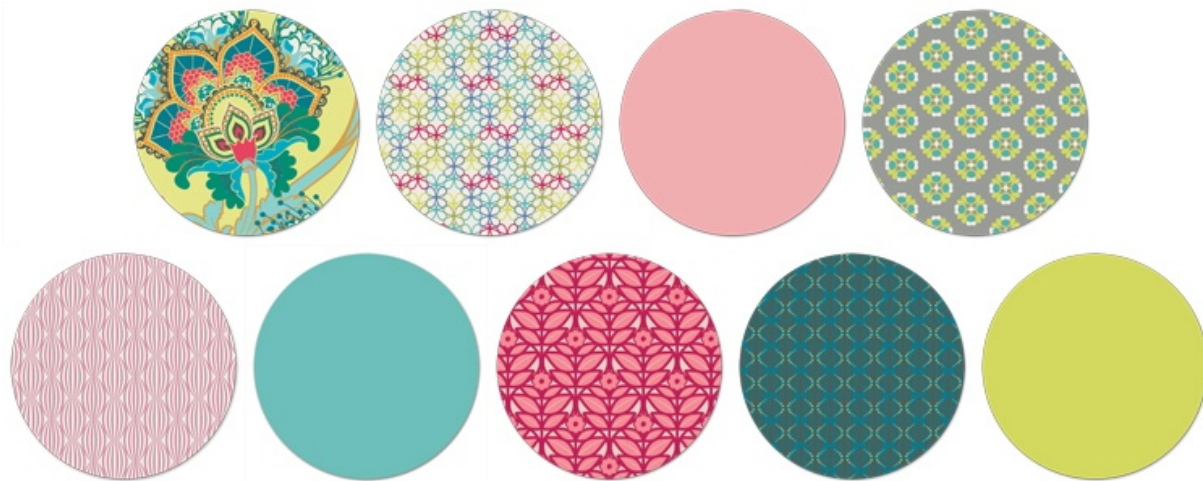
Straps - 1 Fat Quarter PLUS 6, 3" x 6" pieces

Light or Medium Weight Fusible Interfacing - 1.5 Yards



Pattern by Faith Jones of Fresh Lemons Quilts for Art Gallery Fabrics
www.FreshLemonsQuilts.com www.ArtGalleryFabrics.com

Art Gallery Fabrics Used in this Project



Top Row: RHA-500 Artisan Emerald, MO-4808 Posh Florets Bright, PE-411 Quartz Pink, MO-4806 A la Mode Gray

Bottom Row: HG-7408 Illusion Cashmere, PE-424 Mirage Blue, MO-3805 Impressions Sacht, RHA-504 Terra Stamps Smoke, PE-416 Lemonade

Assemble Template

Print last 3 pages of this pattern (Template Pieces A, B, C). Tape Pieces together on dotted lines. Resulting pattern piece will look like Diagram 1 on the right.

Sewing Notes

All seam allowances are 1/2" unless otherwise noted.

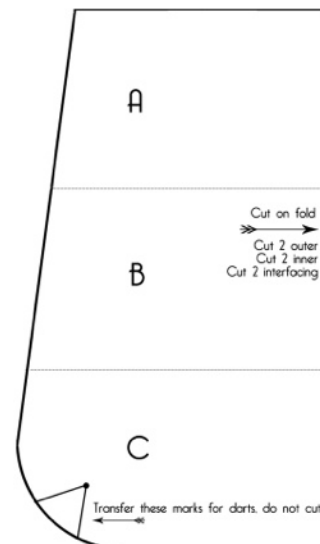


Diagram 1

Prepare the Fabric for the Outer Tote

For the body of the tote, I cut strips from 8 fabrics to create a scrappy look. To recreate this look, cut the following sized strips and sew together along the long edge of the

fabric. (**Remember, use 1/2" seam allowances.**) Repeat this twice, once for the front of the tote and once for the back of the tote.

After sewing your strips together, this will result in 2 pieces of fabric measuring 17 tall" x 21 wide".

3" x 21"
2.5" x 21"
4" x 21"
2.5" x 21"
3" x 21"
3.5" x 21"
2" x 21"
3.5" x 21"

Diagram 2

Strips:



Strips sewn together:



Cut Pattern Pieces from Fabric

Tote Body

Cut 2 pieces from template, along the indicated fold, using **outer** fabric. Mark darts.
Cut 2 pieces from template, along the indicated fold, using **lining** fabric. Mark darts.
Cut 2 pieces from template, along the indicated fold, using light to medium **fusible interfacing**. I used Pellon SF 101.





Straps

Cut 2 pieces, 6" x 18" - Main strap fabric color

Cut 2 pieces, 3" x 6" - Main strap fabric color

Cut 2 pieces, 3" x 6" - First coordinating fabric for scrappy part of strap

Cut 2 pieces, 3" x 6" - Second coordinating fabric for scrappy part of strap

Cut 2 pieces, 3" x 6" - Third coordinating fabric for scrappy part of strap



Outer Tote Assembly

Step 1 - Fuse the interfacing to the outer tote pieces according to the interfacing manufacturers directions.

Step 2 - Sew the darts. On one corner of the first outer shell, fold the fabric, right sides together, lining up markings on bottom. Sew from the marked dot to the markings.



Repeat for the remaining 3 darts on the outer shells.



Step 3 - Place outer pieces right sides together. Pin along the outer edge of the tote and stitch around the sides and bottom. Leave the top open.

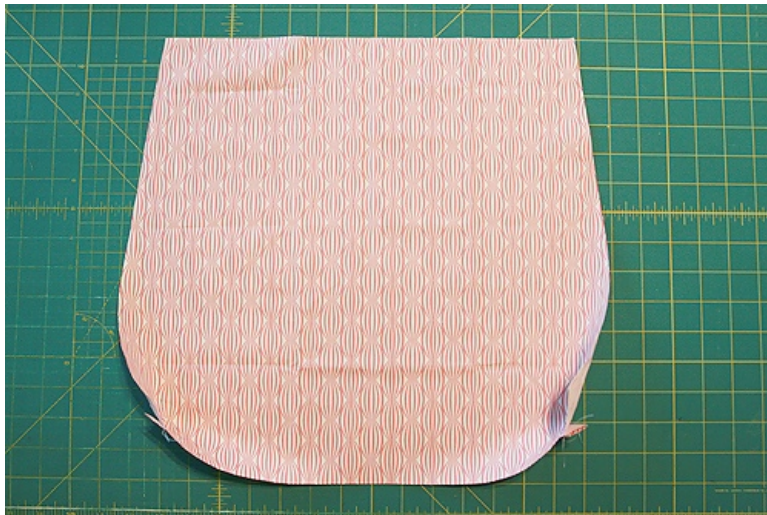


Flip right side out and press seams.



Inner Tote Assembly

Sew darts and assemble just as you did the outer portion of the tote.



Tote Strap Assembly

Step 1 -Using your strap fabric, **assemble two straps** together in a strip as shown in Diagram 3.

6" x 18"	3" x 6"	3" x 6"	3" x 6"	3" x 6"
----------	---------------	---------------	---------------	---------------

Diagram 3

Step 2 - Fold your fabric lengthwise in half. Unfold and fold the edges towards the fold line marked in the center.



Fold back towards center line.



Step 3 - Edge stitch your strap down both sides of the strap.



Attach Straps to Outer Tote Shell

Step 1 - Pin one strap to one side of the outer shell, 1" away from the edge. Baste into place. Repeat with the other side of the strap.



Repeat with the second strap on the other side of the outer shell of the tote.

Attach the Outer Shell of Tote to the Lining of Tote

Step 1 - With the exterior of the case **right side out** and the lining of the case **wrong side out**, place the exterior inside the lining and pin the tops together. Make sure the strap is tucked in.





Step 2- Stitch around the top of the tote, leaving about 4" open to flip the tote right side out.

Step 3 - Flip the tote right side out and tuck the inner lining into the outer shell. Press. Top stitch around the top to close the opening.

Enjoy your Tote!

Fresh AG Tote Templates

