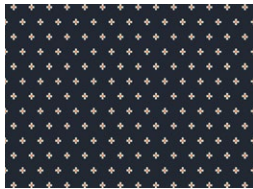


Coming HOME

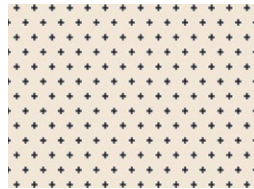
QUILT DESIGNED BY AGFstudio

abode

FABRICS DESIGNED BY MAUREEN CRACKNELL



Fabric A
ABO54604
AFFINITY DEEP



Fabric B
ABO54608
AFFINITY DICE



Fabric C
DSE719
PINK POWDER



Fabric D
ABO54615
AFFINITY ROSE



Fabric E
ABO54606
NESTLE ALONG



Fabric F
ABO54609
SYMMFLORESCENT



Fabric G
ABO54612
FLOWERY FRAY



Fabric H
ABO54601
AFFINITY JADE



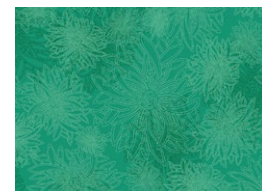
Fabric I
ABO54610
HARMONIOUS LIVING



Fabric J
PE536
CACTUS FLOWER



Fabric K
PE550
LAVA ROCK



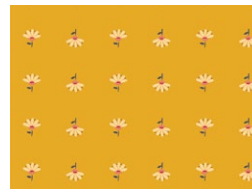
Fabric L
FE540
TROPICAL GREEN



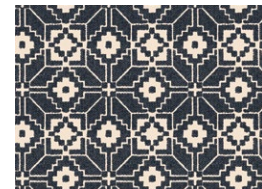
Fabric M
PE408
LINEN WHITE



Fabric N
ABO54614
LAURELAWN



Fabric O
ABO54611
GOOD GRACIOUS



Fabric P
ABO54607
LOVE & LORE BLEU



Coming HOME

FINISHED SIZE | 74" x 74"

FABRIC REQUIREMENTS

Fabric A	ABO54604	½ yd.
Fabric B	ABO54608	¾ yd.
Fabric C	DSE719	¾ yd.
Fabric D	ABO54615	FQ.
Fabric E	ABO54606	FQ.
Fabric F	ABO54609	½ yd.
Fabric G	ABO54612	¾ yd.
Fabric H	ABO54601	FQ.
Fabric I	ABO54610	¾ yd.
Fabric J	PE536	¾ yd.
Fabric K	PE550	1½ yd.
Fabric L	FE540	¾ yd.
Fabric M	PE408	¾ yd.
Fabric N	ABO54614	½ yd.
Fabric O	ABO54611	¾ yd.
Fabric P	ABO54607	¾ yd.
Fabric Q	PE413	¾ yd.
Fabric R	BINABO54	¾ yd.

BACKING FABRIC

WIDEABO54 2½ yds (Suggested)

BINDING FABRIC

Fabric **R** BINABO54 ¾ yd. (Included)

CUTTING DIRECTIONS

Please ensure that all fabrics are ironed thoroughly before cutting them. ¼" seam allowances are included. WOF means width of the fabric.

Fabric A

- Three (3) 9¾" squares.
- Eight (8) 4½" squares.

Fabric B

- Eight (8) 4½" squares.
- Six (6) 9¾" squares.
- Four (4) 2" squares.

Fabric C

- Six (6) 9¾" squares.
- Sixteen (16) 4½" squares.

Fabric D

- Two (2) 9¾" squares.

Fabric E

- Two (2) 9¾" squares.

Fabric F

- Eight (8) 4½" squares.
- Two (2) 9¾" squares.
- Eight (8) 2" squares.

Fabric G

- Three (3) 9¾" squares.

Fabric H

- One (1) 9¾" square.

Fabric I

- Four (4) 26½" x 2½" strips.

Fabric J

- Two (2) 9¾" squares.
- Four (4) 2½" squares.

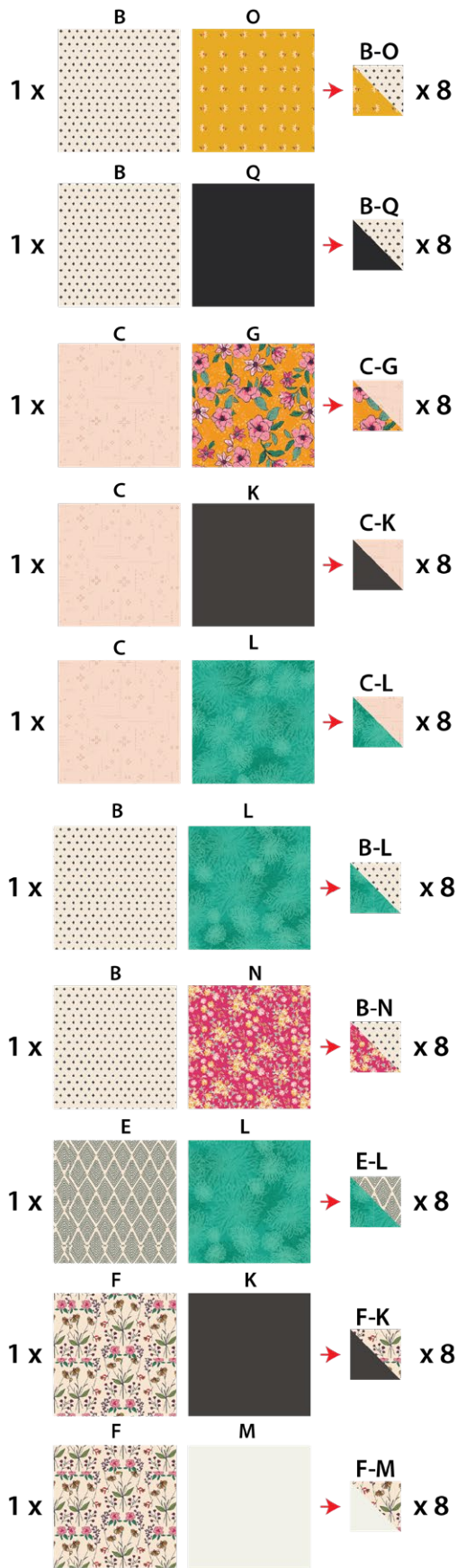


DIAGRAM 3

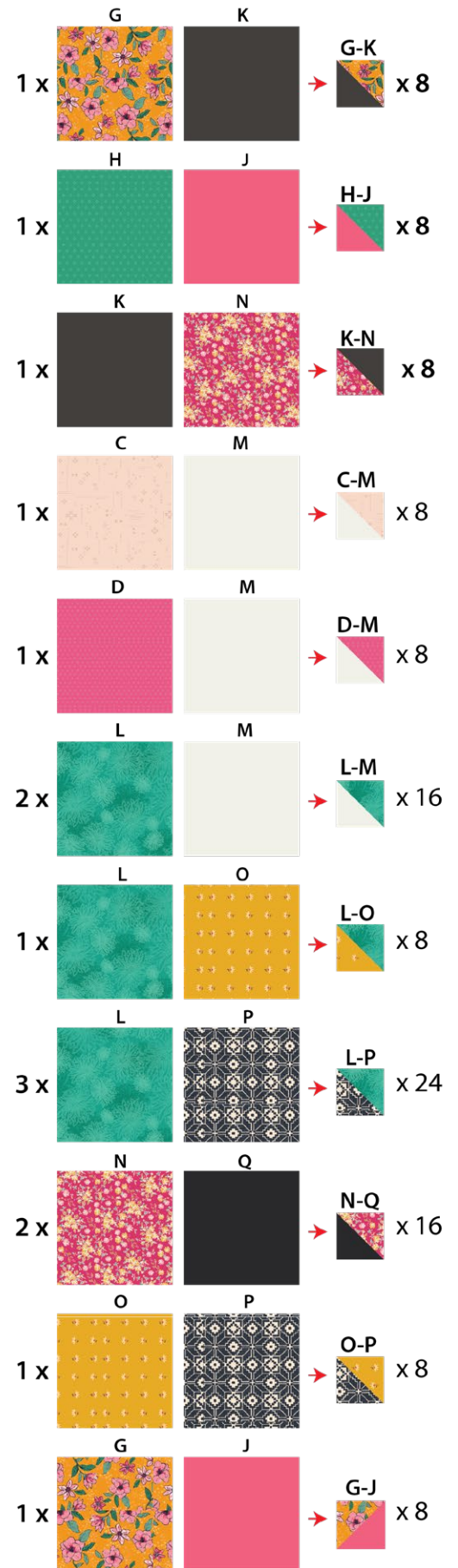


DIAGRAM 4

Block 1:

- Take one (1) $4\frac{1}{2}$ " square from fabrics **N, B, K, A**, two (2) $4\frac{1}{2}$ " squares from fabric **C** and half square triangles (HST). See HST combinations required on diagram 6.
- Arrange them into six (6) rows. See Fig 1 from diagram below for fabric placement and attachment.
- Sew rows together. See Fig 2 from diagram below.

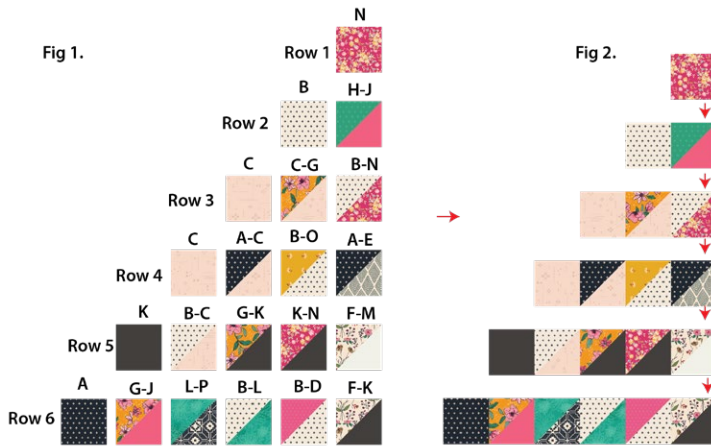


DIAGRAM 5

- Press block 1 and trim the squares as shown on the diagram below. Make a total of four (4) block 1

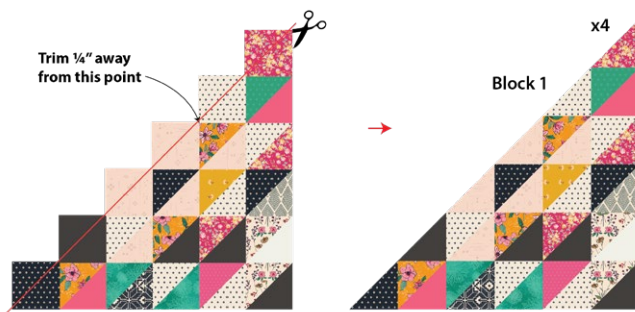


DIAGRAM 6

Block 2:

- Take one (1) $4\frac{1}{2}$ " square from fabrics **N, B, K, A**, two (2) $4\frac{1}{2}$ " squares from fabric **C** and HST required.
- Arrange them into six (6) rows. See Fig 1 from diagram below for fabric placement and attachment.
- Sew rows together. See Fig 2 from diagram below

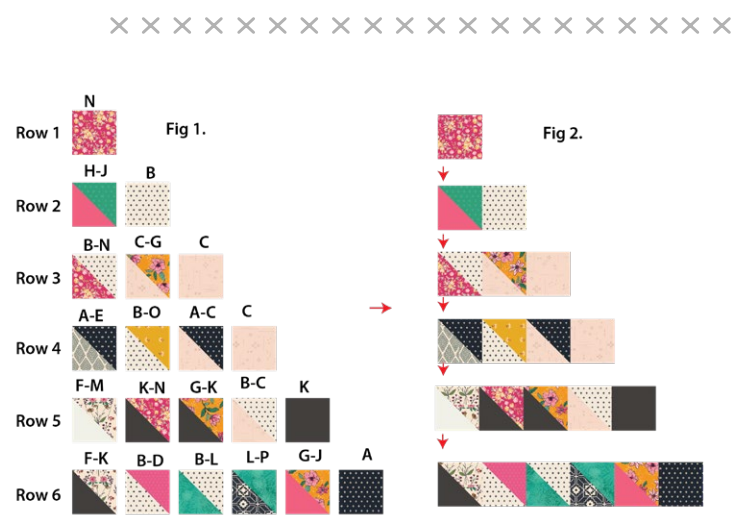


DIAGRAM 7

- Press block 2 and trim the squares as shown on the diagram below. Make a total of four (4) block 2.

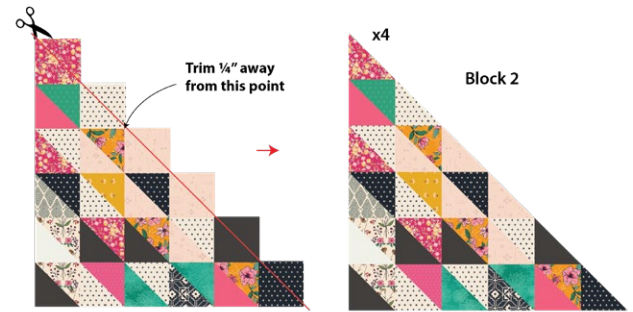


DIAGRAM 8

Block 3:

- Take one (1) $4\frac{1}{2}$ " square from fabrics **F, M** two (2) $4\frac{1}{2}$ " squares from fabrics **K, Q** and HST required.
- Arrange them into six (6) rows. See Fig 1 from diagram below for fabric placement and attachment.
- Sew rows together. See Fig 2 from diagram below.

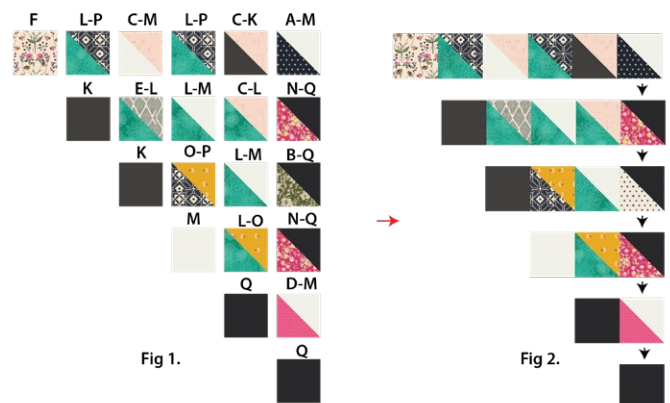


DIAGRAM 9

- Follow the diagram on how to trim the tips of the strips from fabrics **I**, **K**, and **M**.

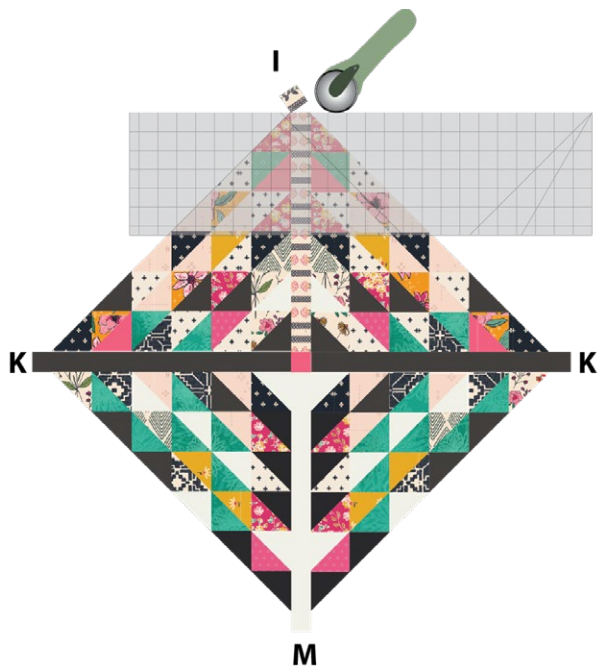


DIAGRAM 14

- Join all four (4) Block 5, following the diagram:

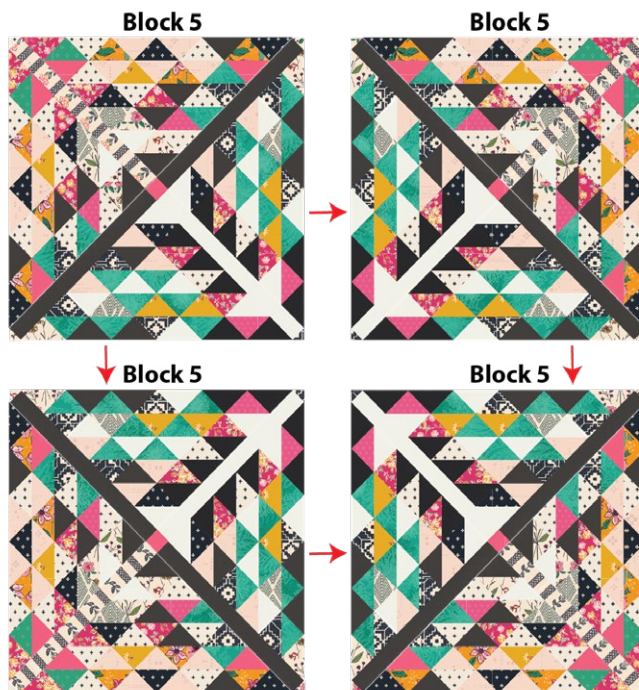


DIAGRAM 16

QUILT TOP

- Take four (4) 2" squares from fabrics **B** and **P**, and eight (8) 2" squares from fabric **F**.
- Use the corner square triangle technique to sew them to the corners of Block 5 following the diagram:



DIAGRAM 15



DIAGRAM 17

QUILT ASSEMBLY

Sew rights sides together.

- Place BACKING FABRIC on a large surface wrong side up. Stretch it with masking tape against that surface.
- Place BATTING on top of backing fabric.
- Place TOP on top of the batting with right side facing up. Smooth away wrinkles using your hands.
- Pin all layers together and baste with basting thread, using long stitches. You can also use safety pins to join the layers.
- Machine or hand quilt starting at the center and working towards the corners. Remember that quilting motifs are a matter of personal preference. Have fun choosing yours!
- After you finished, trim excess of any fabric or batting, squaring the quilt to proceed to bind it.

BINDING

Sew rights sides together.

- Cut enough strips $2\frac{1}{2}$ " wide by the width of the fabric **R** to make a final strip 306" long. Start sewing the binding strip in the middle of one of the sides of the quilt, placing the strip right side down and leaving an approximated 5" tail. Sew with $\frac{1}{4}$ " seam allowance (using straight stitch), aligning the strip's raw edge with the quilt top's raw edge.
- Stop stitching $\frac{1}{4}$ " before the edge of the quilt (DIAGRAM B 1). Clip the threads. Remove the quilt from under the machine presser foot. Fold the strip in a motion of 45° and upward, pressing with your fingers (DIAGRAM B2). Hold this fold with your finger, bring the strip down in line with the next edge, making a horizontal fold that aligns with the top edge of the quilt (DIAGRAM B3). Start sewing at $\frac{1}{4}$ " of the border, stitching all the layers. Do the same in the four corners of the quilt.

- Stop stitching before you reach the last 5 or 6 inches. Cut the threads and remove the quilt from under the machine presser foot. Lay the loose ends of the binding flat along the quilt edge, folding the ends back on themselves where they meet. Press them together to form a crease. Using this crease as the stitching line, sew the two open ends of the binding with right sides together (you can help yourself marking with a pencil if the crease is difficult to see).
- Trim seam to $\frac{1}{4}$ " and press open. Complete the sewing. Turn binding to back of the quilt, turn raw edge inside and stitch by hand using blind stitch.
- If you are using our 2.5 edition (binding fabric), click or scan this QR code to see a tutorial on how to use this specialty fabric.

