



ONCE UPON A TIME

QUILT DESIGNED BY AGFstudio

BEDTIME Stories



FABRICS DESIGNED BY ELIZABETH CHAPPELL



Fabric A  
BES31102  
MCGREGOR'S PATCH



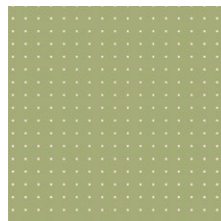
Fabric B  
BES31106  
SOMEUNNY SPECIAL



Fabric C  
BES31107  
PERFECT SPOONFUL



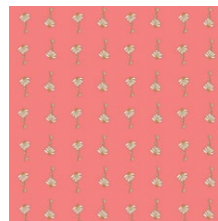
Fabric D  
BES31105  
THE BLUE FAIRY



Fabric E  
BES31104  
DAY TRIP VERT



Fabric F  
BES31100  
LITTLE BRIAR ROSE



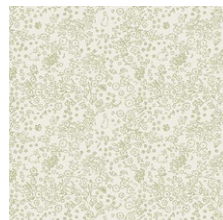
Fabric G  
BES31109  
DAISY SYMPHONY



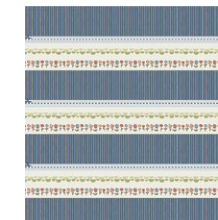
Fabric H  
PE451  
SPROUT



Fabric I  
PE435  
BANANA CREAM



Fabric J  
BES31103  
SOMEUNNY FRESH



Fabric K (Binding)  
BINBES31  
STORY BOUND



(Backing)  
BES31101  
TALES UNFOLDED



# ONCE UPON A TIME

FINISHED SIZE | 88" x 88"

## FABRIC REQUIREMENTS

Fabric <b>A</b>	BES31102	$\frac{5}{8}$ yd.
Fabric <b>B</b>	BES31106	1½ yd.
Fabric <b>C</b>	BES31107	$\frac{3}{8}$ yd.
Fabric <b>D</b>	BES31105	$\frac{5}{8}$ yd.
Fabric <b>E</b>	BES31104	1½ yd.
Fabric <b>F</b>	BES31100	$\frac{7}{8}$ yd.
Fabric <b>G</b>	BES31109	1½ yd.
Fabric <b>H</b>	PE541	1 yd.
Fabric <b>I</b>	PE435	$\frac{7}{8}$ yd.
Fabric <b>J</b>	BES31103	3¼ yd.
Fabric <b>K</b>	BINBES31	$\frac{3}{4}$ yd.

BACKING FABRIC  
BES31101 8 yds (*Suggested*)

BINDING FABRIC  
Fabric **K** BINBES31 (*Included*)

## CUTTING DIRECTIONS

*Please ensure that all fabrics are ironed thoroughly before cutting them. ¼" seam allowances are included. WOF means width of the fabric.*

### Fabric A:

- Five (5) 9¾" squares.

### Fabric B:

- Eighteen (18) 9¾" squares.

### Fabric C:

- Two (2) 9¾" squares.

### Fabric D:

- Five (5) 9¾" squares.

### Fabric E:

- Thirteen (13) 9¾" squares.

### Fabric F:

- Nine (9) 9¾" squares.

### Fabric G:

- Nine (9) 9¾" squares.
- Sixteen (16) 4½" squares.

### Fabric H:

- Twelve (12) 9¾" squares.

### Fabric I:

- Nine (9) 9¾" squares.

### Fabric J:

- Eight (8) 9¾" squares.
- Four (4) 32½" x 4½" rectangles.
- Four (4) 28½" x 4½" rectangles.
- Four (4) 20½" x 4½" rectangles.
- Four (4) 16½" x 4½" rectangles.
- Twelve (12) 12½" x 4½" rectangles.
- Twelve (12) 8½" x 4½" rectangles.
- Four (4) 4½" squares.

### Fabric K:

- Nine (9) WOF x 2½" strips. (Binding)

## CONSTRUCTION

*Sew all right sides together with ¼" seam allowance.*

### Eight at a time HST (Half Square Triangle)

- Pair one (1) 9¾" squares from fabrics **A** and **E** and align both squares right sides facing.
- Draw two diagonal lines on the back of the fabric. (See Fig 2)
- Stitch at scant ¼" from each side of the drawn lines. (See Fig 3)
- Cut your piece following the red lines. (See Fig 4).
- Open pieces and press.
- Repeat this step one more time with the same fabrics. You should have a total of sixteen (16) **A-E** HST. Trim each piece to 4½".

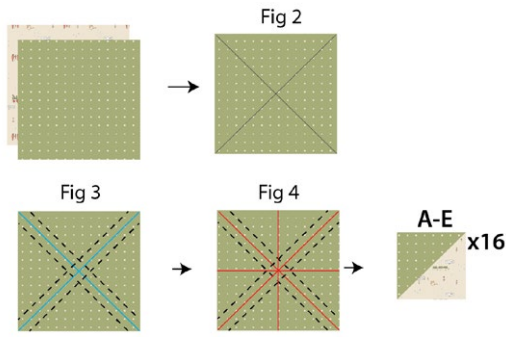
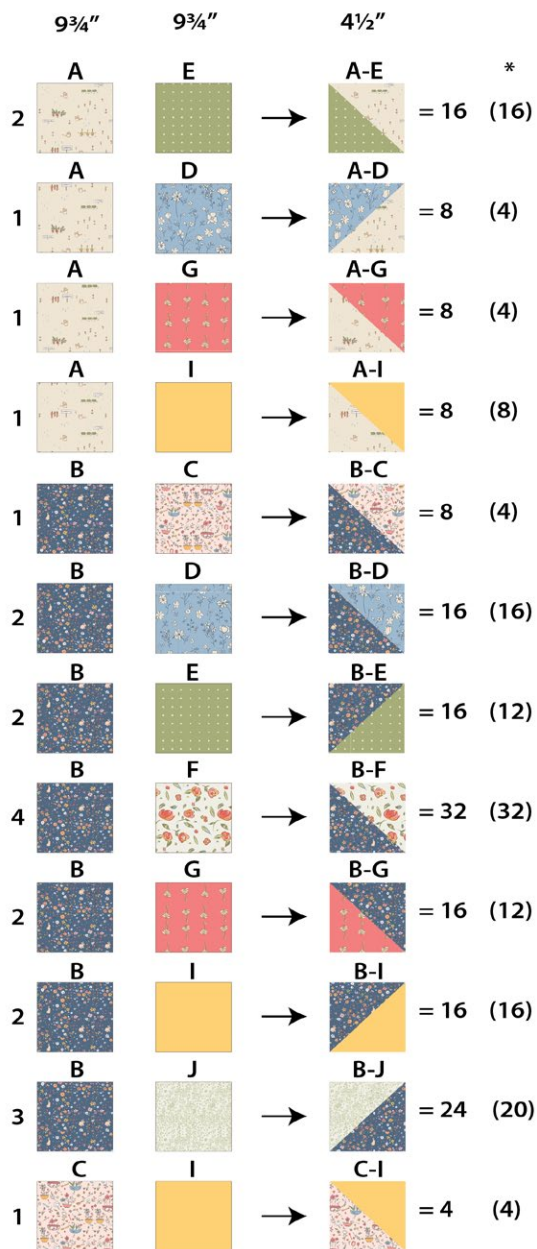


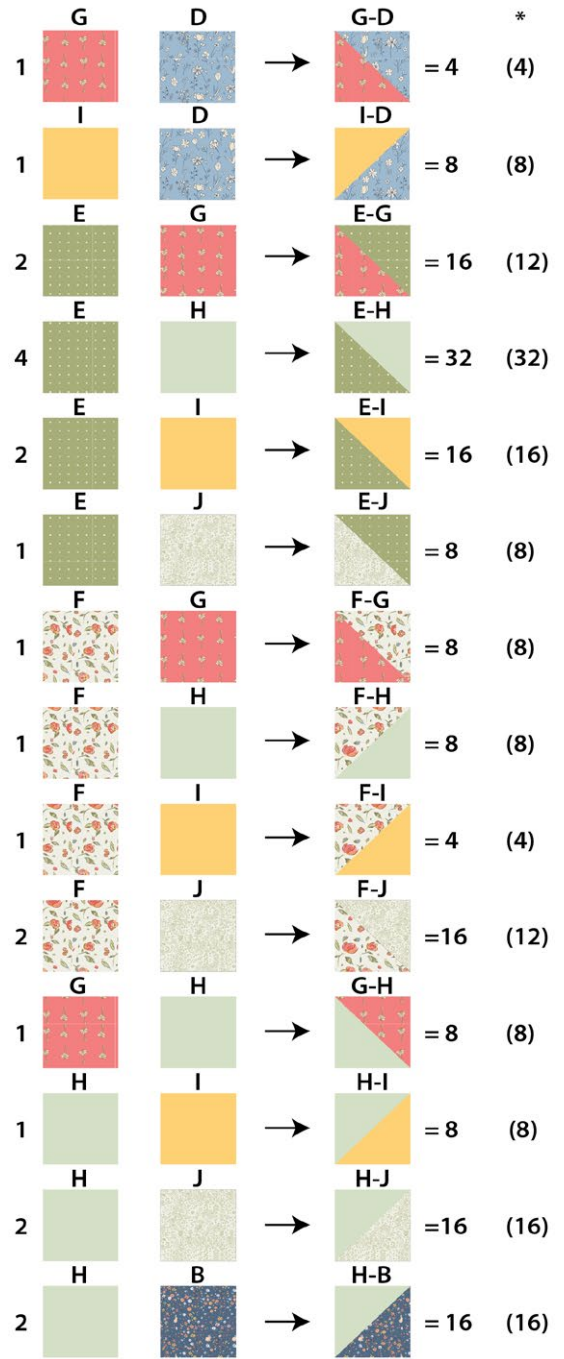
DIAGRAM 1

- Repeat the eight at a time HST method and make the following combinations. See diagrams 2 and 3.



\* ( )quantity of squares you will need

DIAGRAM 2



\* ( )quantity of squares you will need

DIAGRAM 3

- After you have all the HST combinations ready we will make four (4) identical blocks.







