

featuring ARCTIC TALE CAPSULE BY AGF STUDIO

POLAR



capsules
by AGF

FREE PATTERN



POLAR



QUILT DESIGNED BY *AGFstudio*

ARCTIC TALE



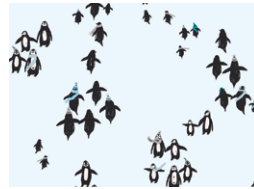
FABRICS DESIGNED BY AGF STUDIO



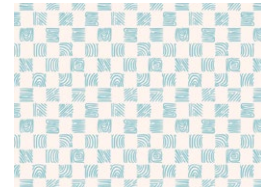
Fabric A
DSE710
BLUE MINERALE



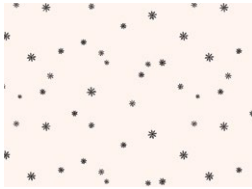
Fabric B
CAPAT12110
POLAR FRIENDS



Fabric C
CAPAT12100
FROZEN FLIPPERS



Fabric D
CAPAT12109
OCEAN ECHOES



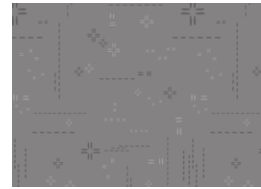
Fabric E
CAPAT12102
CHASING SNOWFLAKES



Fabric F
PE496
CRYSTALLINE



Fabric G
PE430
MOONSTONE



Fabric H
DSE703
GRANITE



Fabric I
PE428
NOCTURNAL



Fabric J
PE518
SWIMMING POOL



Fabric K
DSE702
REFLECTION



Fabric L
DSE708
INDIGO SKY



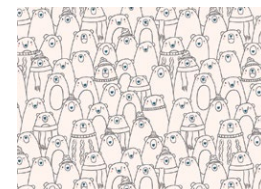
Fabric M
PE413
CAVIAR



Fabric N
PE498
HEART OF THE OCEAN



Fabric O
PE499
DEEP BLACK



Fabric P
CAPAT12103
COZY BEARS



ART GALLERY FABRICS®

artgalleryfabrics.com

POLAR



FINISHED SIZE | 74½" x 74½"

Please read all instructions thoroughly before beginning.

FABRIC REQUIREMENTS

Fabric A	DSE710	½ yd.
Fabric B	CAPAT12110	½ yd.
Fabric C	CAPAT12100	½ yd.
Fabric D	CAPAT12109	¼ yd.
Fabric E	CAPAT12102	¼ yd.
Fabric F	PE496	½ yd.
Fabric G	PE430	FQ.
Fabric H	DSE703	¼ yd.
Fabric I	PE428	¾ yd.
Fabric J	PE518	F8.
Fabric K	DSE702	½ yd.
Fabric L	DSE708	3⅝ yd.
Fabric M	PE413	2 yd.
Fabric N	PE498	FQ.
Fabric O	PE499	F8.
Fabric P	CAPAT12103	¾ yd.
Fabric Q	CAPAT12106	1¼ yd.
Fabric R	BINCAPAT12	⅝ yd.

BACKING FABRIC

CAPAT12108 4½ yds (*Suggested*)

BINDING FABRIC

Fabric **R** BINCAPAT12 ⅝ yd (*Included*)

Our Fat Quarter measurement is 22" x 18".

Our Fat Eight measurement is 11" x 18".

CUTTING DIRECTIONS

Please ensure that all fabrics are ironed thoroughly before cutting them. ¼" seam allowances are included. WOF means width of the fabric.

Fabric A

- One (1) WOF x 9" strip, then:

Sub-cut into One (1) 14" x 9" rectangle.

One (1) 10½" x 7" rectangle.

Two (2) 6" squares.

One (1) 6" x 5" rectangle.

- One (1) WOF x 4½" strip, then:

Sub-cut into One (1) 9½" x 4½" strip.

Fabric B

- One (1) WOF x 12" strip, then:

Sub-cut into One (1) 10" x 12" rectangle.

One (1) 15" x 8" rectangle.

One (1) 16" x 7" rectangle.

- One (1) WOF x 6" strip, then:

Sub-cut into One (1) 6" square.

One (1) 6" x 4" rectangle.

One (1) 4" square.

One (1) 11" x 3" strip.

Fabric C

- One (1) WOF x 10" strip, then:

Sub-cut into One (1) 10" square.

One (1) 16" x 9" rectangle.

One (1) 4" x 8" rectangle.

One (1) 6" square.

One (1) 5" x 6" rectangle.

Fabric M

- One (1) Template M.

Fabric N

One (1) Template B.

Fabric O

- One (1) 5" square.

Fabric P

- Eight (8) WOF x 2½" strips, then:

Sub-cut into Four (4) 25½" x 2½" strips.

One (1) 4¼" square.

Fabric Q

- Six (6) WOF x 5½" strips, then:

Sub-cut into Four (4) 17" x 5½"

One (1) 8¾" square.

Fabric R (Binding)

- Seven (7) WOF x 2½" strips.

SECTION INSTRUCTIONS

*¼" seam allowances are included.
WOF means width of fabric.*

SECTION A (NOSE)

#1

One (1) 5" square from fabric **O**.

#2

One (1) 5" square from fabric **J**.

#3

One (1) 5" square from fabric **D**.

SECTION B (MOUTH)

#4

One (1) 5" square from fabric **M**.

#5

One (1) 5" square from fabric **E**.

SECTION C (FRONT FACE)

#6

One (1) 6" square from fabric **J**.

#7

One (1) 6" square from fabric **F**.

#8

One (1) 6" square from fabric **H**.

#9

One (1) 6" square from fabric **D**.

SECTION D (BACK FACE)

#10

One (1) 8" x 4" rectangle from fabric **C**.

#11

One (1) 3" x 5" rectangle from fabric **D**.

#12

One (1) 11" x 3" strip from fabric **B**.

SECTION E (FRONT LEFT LEG)

#13

One (1) 6" square from fabric **C**.

#14

One (1) 6" square from fabric **A**.

#15

One (1) 6" square from fabric **E**.

#16

One (1) 7½" square from fabric **F**.

#17

One (1) 5" square from fabric **D**.

#18

One (1) 4" square from fabric **B**.

#19

One (1) 5" x 4" rectangle from fabric **H**.

SECTION F (NECK)

#20

One (1) 10½" x 7" rectangle from fabric **A**.

#21

One (1) 10½" x 7" rectangle from fabric **I**.

#22

One (1) 16" x 7" rectangle from fabric **B**.

7. Sewing sections (I-J) to K:

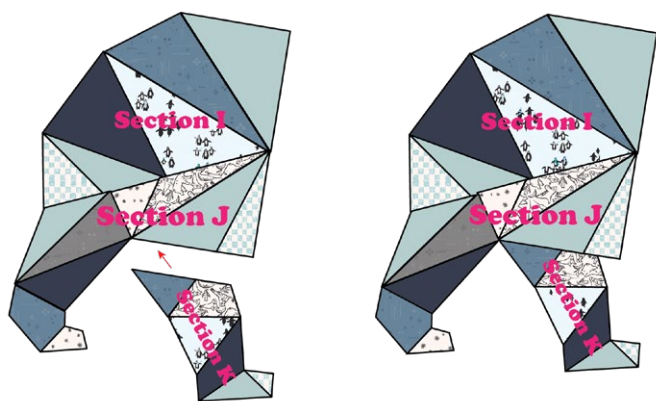


DIAGRAM 30

8. Sewing front side of the bear to back of the bear:

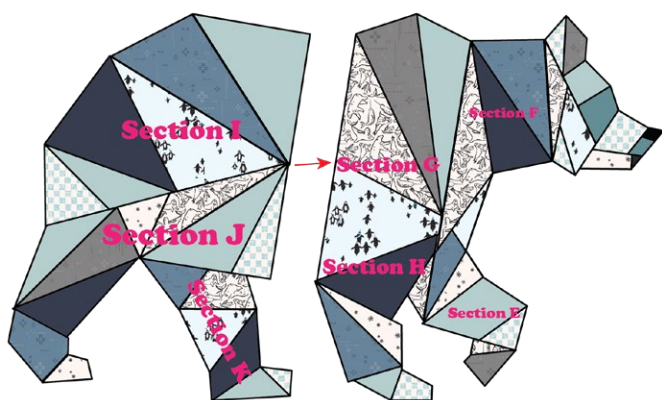


DIAGRAM 31

- Sew every section the same way until the bear is done; once all the pieces are together you can tear out the paper.
- Be careful when tearing out the paper as you don't want to make your stitches loose or pop.

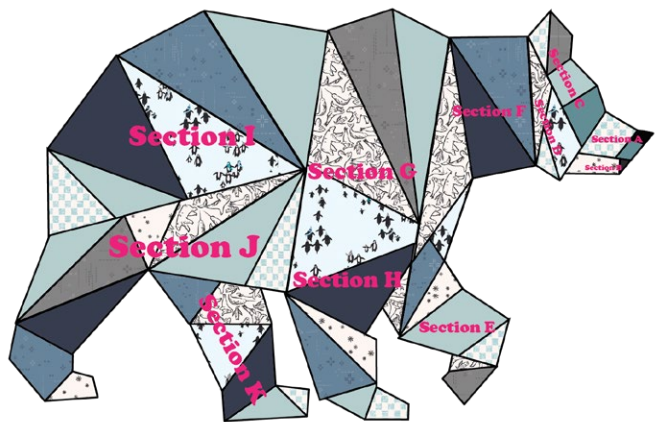


DIAGRAM 32

- Follow this map when taping your papers together for the background.

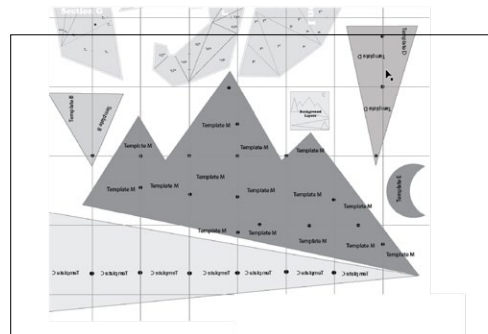


DIAGRAM 33

SEWING THE BACKGROUND

Sew all rights sides together with 1/4" seam allowance.

- Tape all your templates together and cut them right on the line, as these templates will be sewn as applique and will have raw edge.
- Take two (2) 58 1/2" x WOF from fabric L together and trim it to a 57 1/2" square.

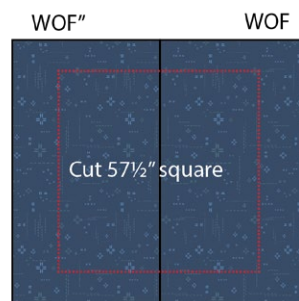


DIAGRAM 34

- Take one (1) template M for the main mountain and place the tallest peak right in the middle following the center seam of the background and measure 10 1/2" from the top edge down, and 1" from the right side edge.

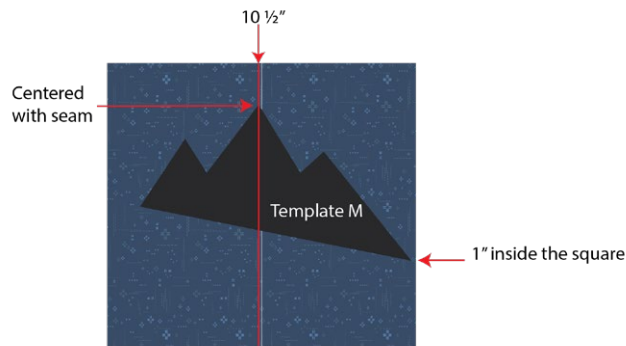


DIAGRAM 35

- Sew two (2) 67½" strip from fabric **P** on each side of the previously sewn piece.

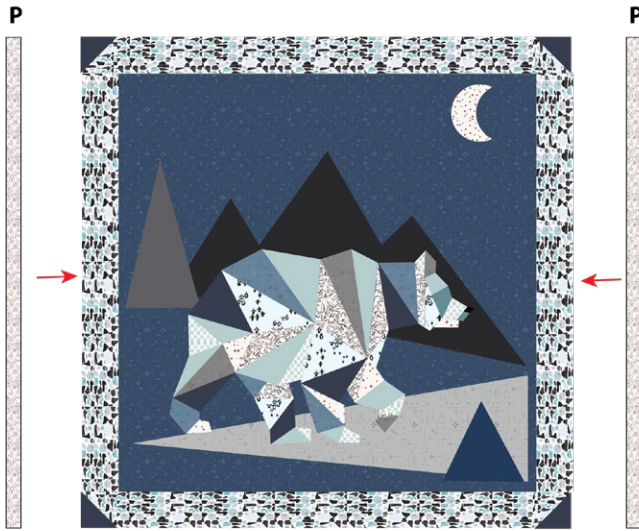


DIAGRAM 48

- Sew two (2) **(I-P) P** strip on top and bottom of the previously sewn piece.



DIAGRAM 49

QUILT TOP



DIAGRAM 50

QUILT ASSEMBLY

Sew rights sides together.

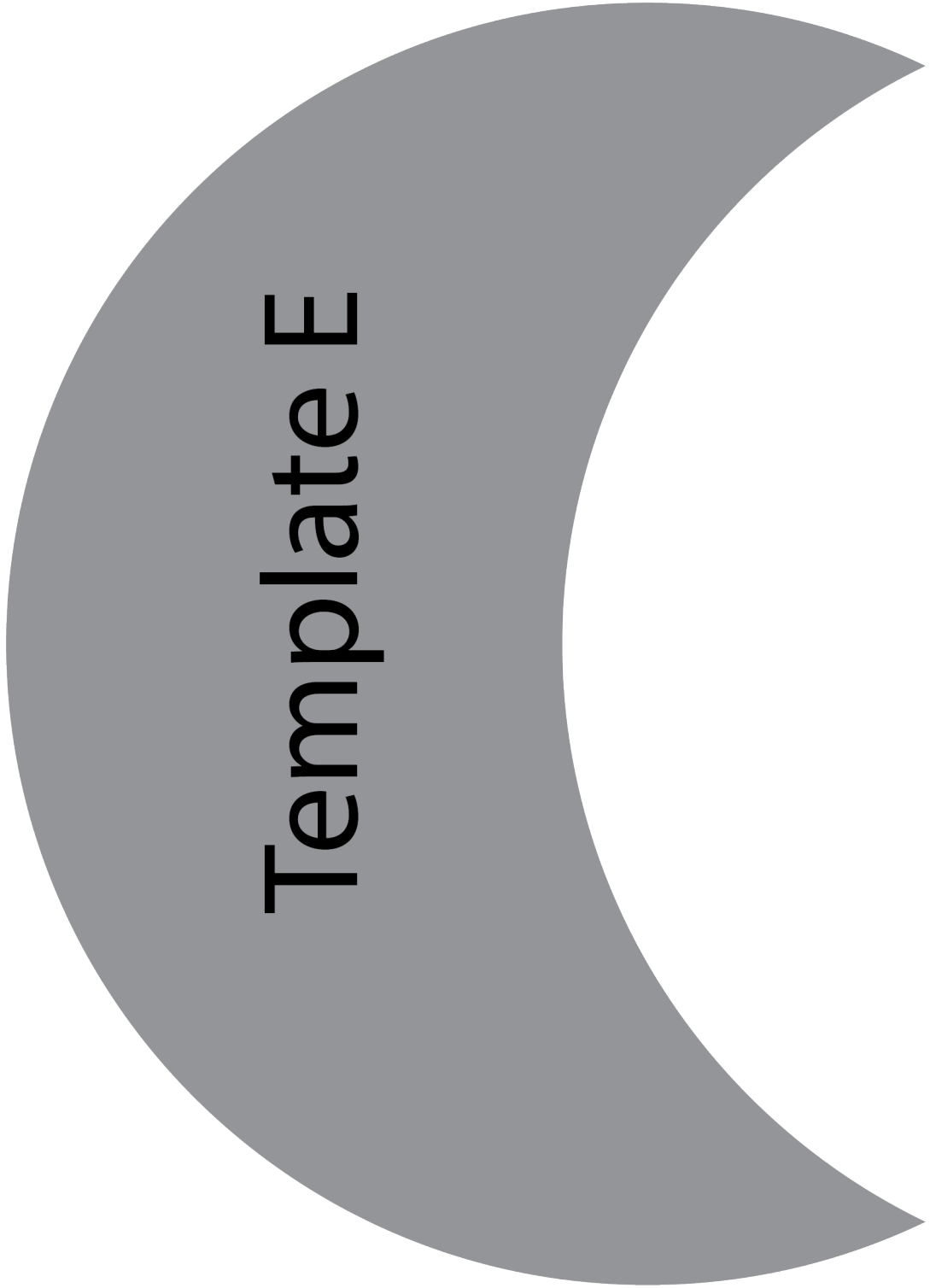
- Place **BACKING FABRIC** on a large surface wrong side up. Stretch it with masking tape against that surface.
- Place **BATTING** on top of backing fabric.
- Place **TOP** on top of the batting with right side facing up. Smooth away wrinkles using your hands.
- Pin all layers together and baste with basting thread, using long stitches. You can also use safety pins to join the layers.
- Machine or hand quilt starting at the center and working towards the corners. Remember that quilting motifs are a matter of personal preference. Have fun choosing yours!
- After you finished, trim excess of any fabric or batting, squaring the quilt to proceed to bind it.



Template B

Template M

Template E



Template C



Template C

Template M

Template C

Template M

Template C

Template M

Template C

