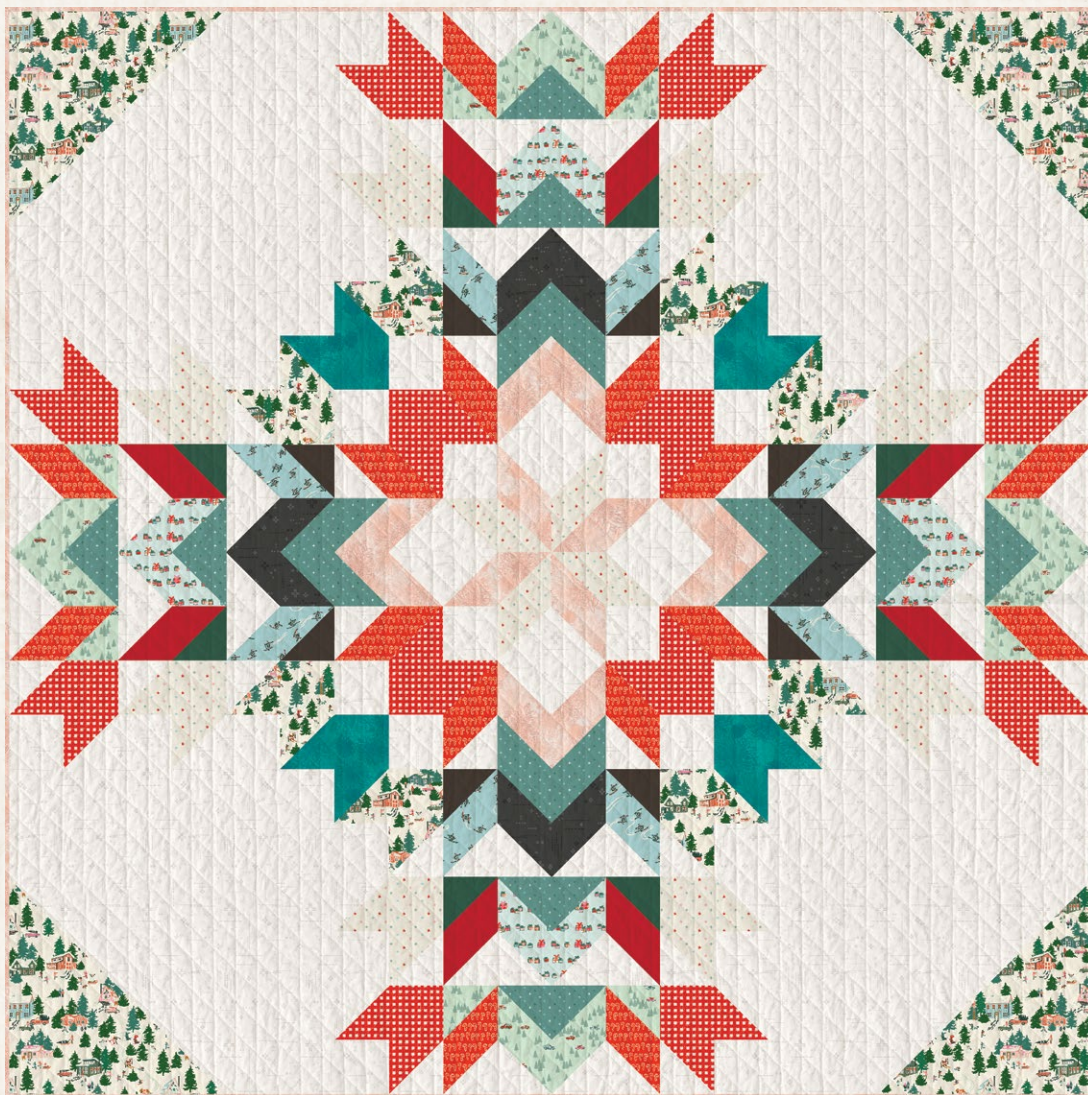
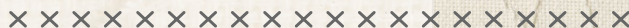




'Tis the Season



FREE PATTERN



Christmas IN THE CABIN

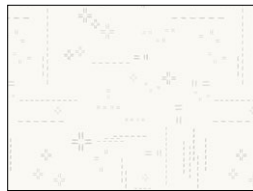
QUILT DESIGNED BY AGFstudio

'Tis the Season

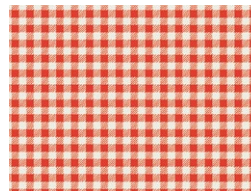
FABRICS DESIGNED BY AGF STUDIO



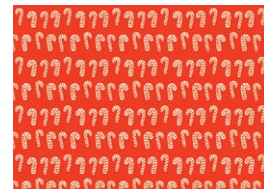
Fabric A
CCA258900
MERRY TOWN



Fabric B
DSE727
AIRY



Fabric C
CCA258913
CHECKERED CHARM



Fabric D
CCA258903
PEPPERMINT PARADE



Fabric E
CCA258905
CUT & CARRY FARM



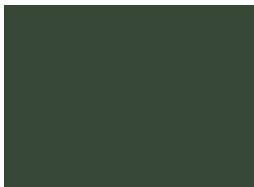
Fabric F
CCA258906
TWINKLING SKIES PINE



Fabric G
CCA258910
TWINKLING SKIES SUGAR



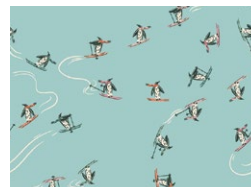
Fabric H
PE-490
RUBY



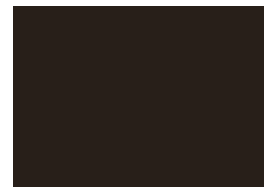
Fabric I
PE-466
HUNTER FIELDS



Fabric J
CCA258908
SEASON OF GIVING



Fabric K
CCA258901
SNOW RUSH



Fabric L
PE-429
COFFEE BEAN



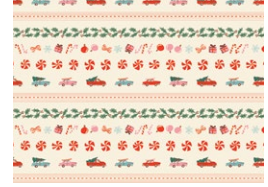
Fabric M
DSE730
VOLCANIC



Fabric N
FE-539
ESMERALDA



Fabric O
FE-518
BALLERINA



Binding Fabric P
BINCCA258915
HOLIDAY BOUND





FINISHED SIZE | 80" x 80"

FABRIC REQUIREMENTS

Fabric A	CCA258900	1 yd.
Fabric B	DSE727	3 ⁷ / ₈ yd.
Fabric C	CCA258913	5 ⁸ / ₈ yd.
Fabric D	CCA258903	1 ¹ / ₂ yd.
Fabric E	CCA258905	1 ¹ / ₂ yd.
Fabric F	CCA258906	5 ⁸ / ₈ yd.
Fabric G	CCA258910	1 ¹ / ₂ yd.
Fabric H	PE490	3 ⁸ / ₈ yd.
Fabric I	PE466	F8.
Fabric J	CCA258908	3 ⁸ / ₈ yd.
Fabric K	CCA258901	3 ⁸ / ₈ yd.
Fabric L	PE429	F8.
Fabric M	DSE730	3 ⁸ / ₈ yd.
Fabric N	FE539	3 ⁸ / ₈ yd.
Fabric O	FE518	5 ⁸ / ₈ yd.
Fabric P	BINCCA258915	5 ⁸ / ₈ yd.

BACKING FABRIC
CCA258910 7 1/2 yds (Suggested)

BINDING FABRIC
Fabric **P** BINCCA258915 (Included)

CUTTING DIRECTIONS

1/4" seam allowances are included.
WOF means width of fabric.

Fabric A

- Two (2) 16⁷/₈" squares.
- Eight (8) 4¹/₂" squares.
- Two (2) 10" squares.

Fabric B:

- Two (2) 16⁷/₈" squares.
- Nine (9) 10" squares.
- Forty eight (48) 4¹/₂" squares.
- Sixteen (16) 8¹/₂" x 4¹/₂" rectangles.
- Four (4) 28¹/₂" x 4¹/₂" rectangles.
- Four (4) 24¹/₂" x 4¹/₂" rectangles.
- Eight (8) 12¹/₂" x 4¹/₂" rectangles.

Fabric C:

- Three (3) 10" squares.
- Twelve (12) 4¹/₂" squares.

Fabric D:

- Four (4) 10" squares.

Fabric E:

- One (1) 10" square.
- Four (4) 8¹/₂" x 4¹/₂" rectangles.
- Eight (8) 4¹/₂" squares.

Fabric F:

- Twelve (12) 8¹/₂" x 4¹/₂" rectangles.
- Eight (8) 4¹/₂" squares.

Fabric G:

- Two (2) 10" squares.
- Two (2) 4⁷/₈" squares.
- Twelve (12) 4¹/₂" squares.

Fabric H:

- Two (2) 10" squares.

Fabric I:

- One (1) 10" square.

Fabric J:

- Eight (8) 4¹/₂" squares.
- Four (4) 8¹/₂" x 4¹/₂" rectangles.

Fabric K:

- Two (2) 10" squares.

Fabric L:

- One (1) 10" square.

Fabric M:

- Eight (8) 4¹/₂" squares.
- Four (4) 8¹/₂" x 4¹/₂" rectangles.

Fabric N:

- One (1) 10" square.
- Four (4) 4¹/₂" squares.

Fabric O:

- Two (2) 4⁷/₈" squares.
- Twelve (12) 4¹/₂" squares.
- Four (4) 8¹/₂" x 4¹/₂" rectangles.

Fabric P:

- Eight (8) 2¹/₂" x WOF strips (Binding).

CONSTRUCTION

Sew all rights sides together with 1/4" seam allowance.

Magic 8 method:

- Start by placing one (1) 10" square from fabrics **A** and **B** right sides facing together.
- Mark a diagonal line across both diagonals on the wrong side of the top fabric square (Fig. 1)
- Sew a SCANT 1/4" seam on each side of each diagonal line and press the sewn square to set the seams (Fig. 2)
- To separate the square into eight units you will be making four cuts: a vertical, a horizontal, and two diagonal. As you make the cuts, don't rotate the fabric or your pieces may shift position. Instead, rotate the mat or walk around it.
- Open the blocks outward and lightly press. Be very careful to only press up and down, NOT back and forth so as not to stretch them. Your seam should be pressed (both layers) toward the darker color.
- Trim each half square triangle (HST) to a 4¹/₂" square.

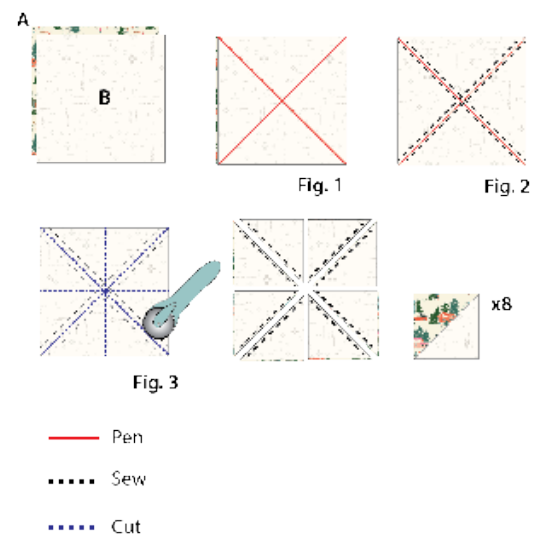


DIAGRAM 1



- Repeat the Magic 8 method for the following 10" squares of the following fabric combinations:

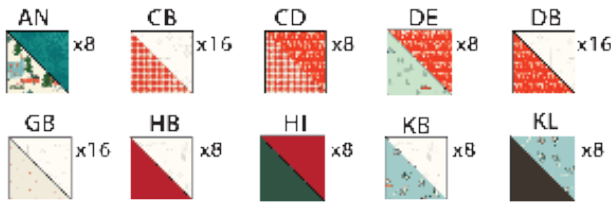


DIAGRAM 2

Half Square Triangle (HST) Construction

- Start by placing one (1) $4\frac{7}{8}$ " square from fabrics **G** and **O** right sides facing each other.
- Mark a diagonal line on the wrong side of the top fabric square. (Fig1)
- Sew a scant $\frac{1}{4}$ " seam on each side of the diagonal line.
- Press the sewn square to set the seams and with a rotary cutter cut through the drawn line. (Fig 2)
- Open each half square triangle (HST) outward and lightly press. Be careful to only press up and down, NOT back and forth so as not to stretch them. Your seams should be pressed (both layers) towards the darker color.
- Trim each half square triangle (HST) to a $4\frac{1}{2}$ " square. Make a total of four (4) **OG** half square triangles (HST)

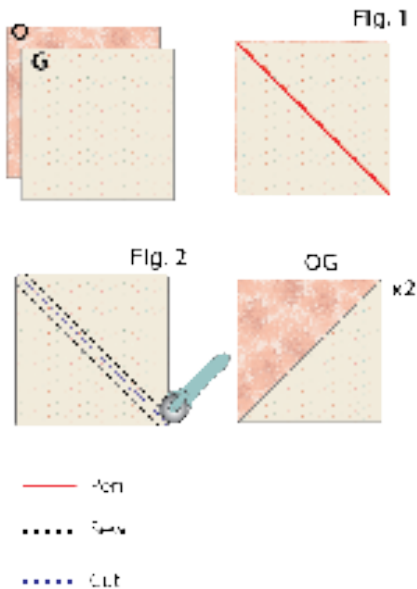


DIAGRAM 3

- Repeat the Half square Triangle technique with two (2) $16\frac{7}{8}$ " squares from fabric **A** and **B**. Trim each piece to $16\frac{1}{2}$ " square.
- Make a total of four (4) **AB** Half Square Triangles (HST)

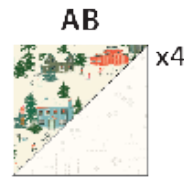


DIAGRAM 4

Flying Geese Technique

- Place one (1) $4\frac{1}{2}$ " square from fabric **B** on the right edge of one (1) $8\frac{1}{2}$ " x $4\frac{1}{2}$ " rectangle from fabric **E** mark a diagonal line from the top left to the bottom right corner of the square.
- Sew through the drawn line and trim $\frac{1}{4}$ " away from the seam and press. (Fig1)
- Place another $4\frac{1}{2}$ " square from fabric **B** on the left edge of the same piece, mark a diagonal line from the top right to the bottom left corner of the square and sew through the line.
- Trim $\frac{1}{4}$ inch away from the seam and press (Fig 2).
- Each flying geese should measure $8\frac{1}{2}$ " x $4\frac{1}{2}$ ". Make a total of four (4) **BEB** flying geese combination.

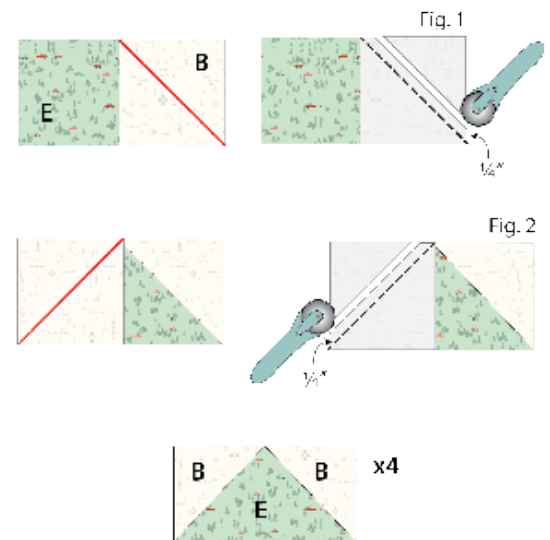


DIAGRAM 5

- Repeat the flying geese technique with the following fabric combination.

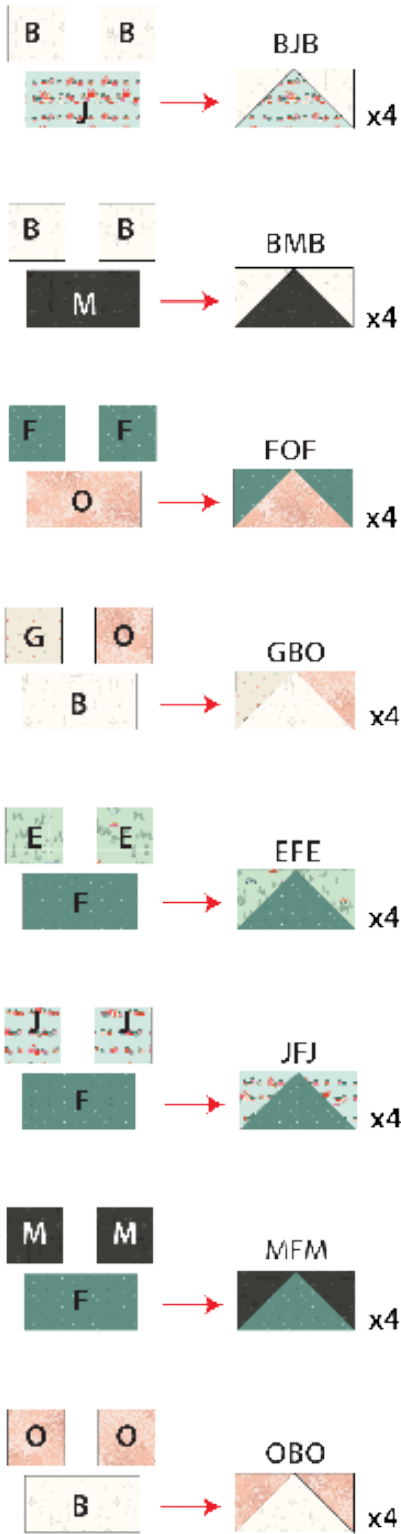


DIAGRAM 6

- Take four (4) **OG** half square triangle (HST) and pair them them following diagram 7.

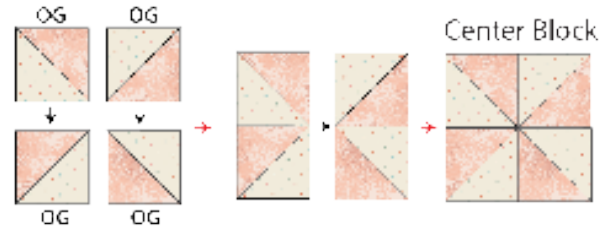


DIAGRAM 7

Block 1

- Sew pieces into four rows then, sew rows together.

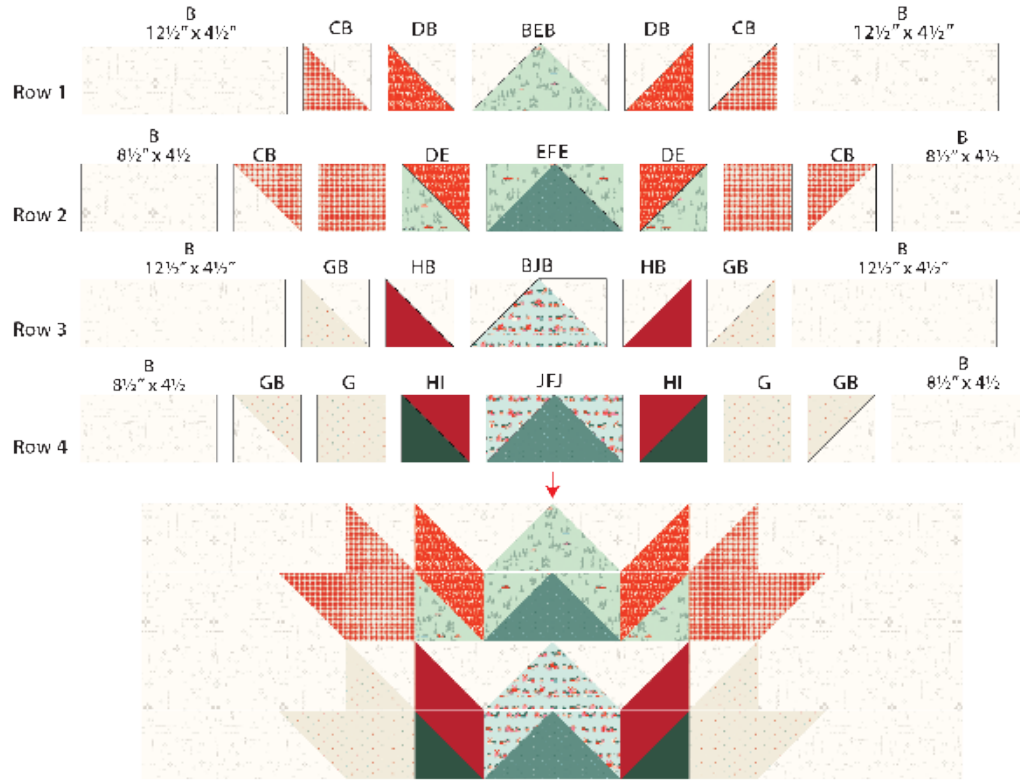


DIAGRAM 8

- Now, join one (1) 16 1/2" **AB** half square triangle (HST) on each side of your 4 assembled rows. Make a total of two (2) Block 1.

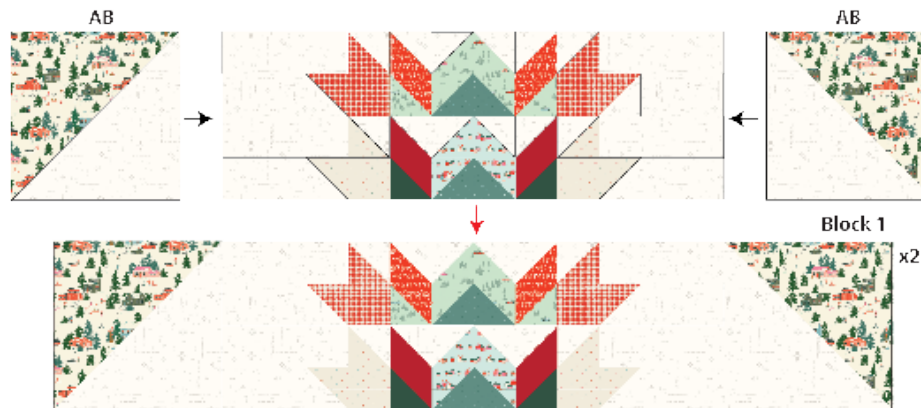


DIAGRAM 9

Center Block

- Join Flying Geese and the Center Block as shown on diagram below.

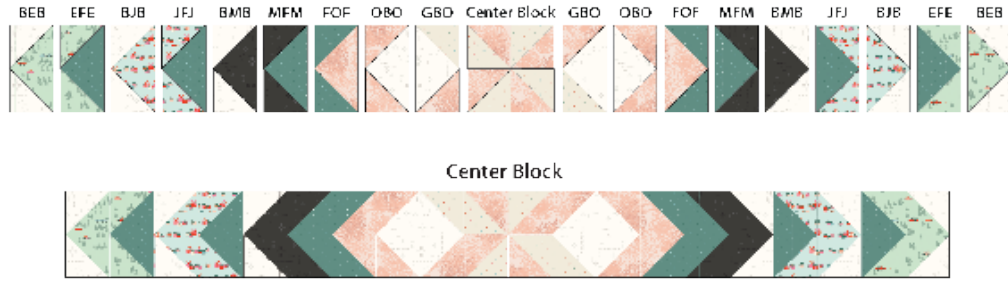


DIAGRAM 10

Block 2

- Sew pieces into five rows and sew rows together. Make a total of two (2) block 2.

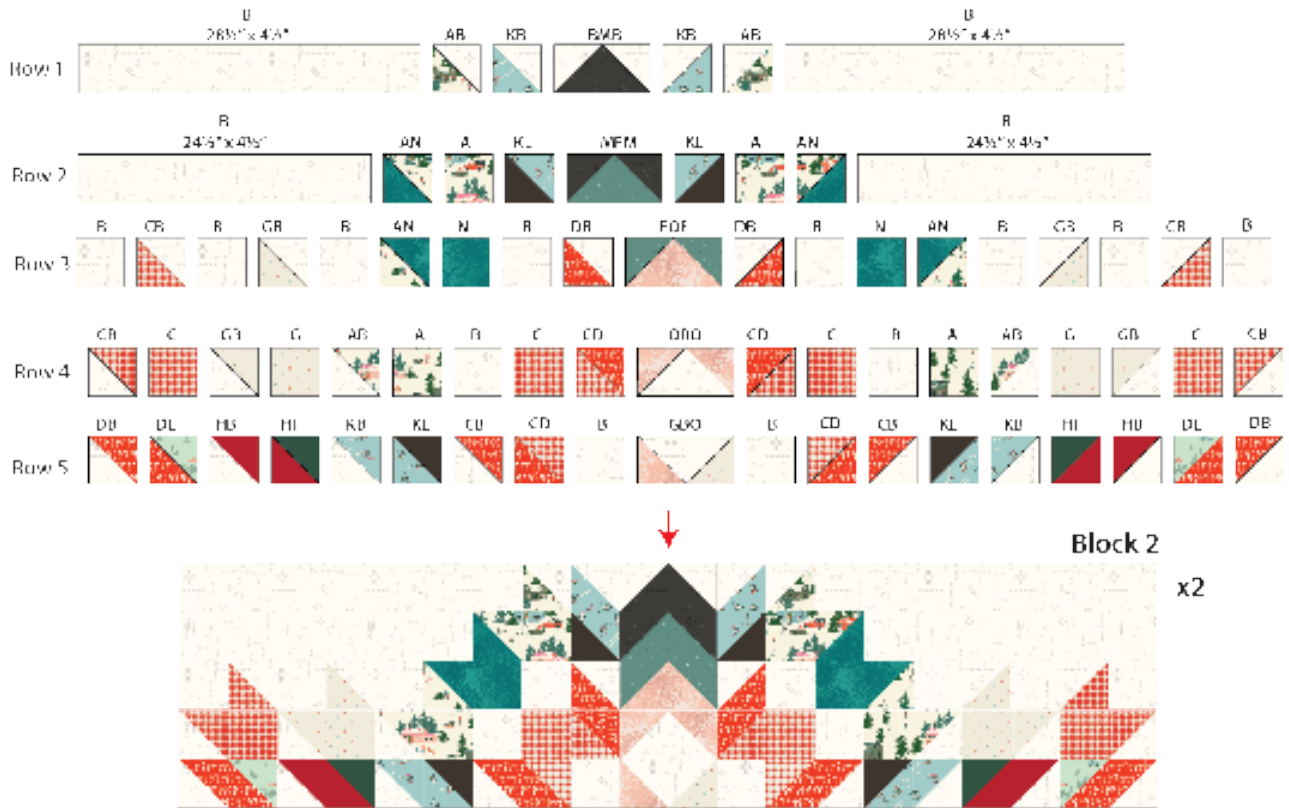


DIAGRAM 11

- Join block 1 and 2. That will be Block 3. Make a total of two (2) Block 3



DIAGRAM 12

- Join two (2) block 3 with a center block.



DIAGRAM 13

- Quilt as desired.



DIAGRAM 14

QUILT ASSEMBLY

Sew rights sides together.

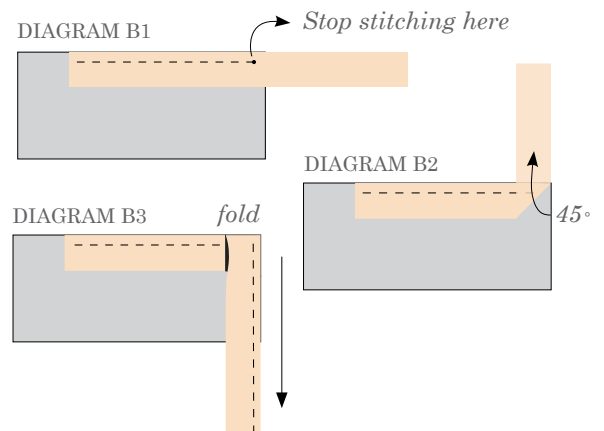
- Place BACKING FABRIC on a large surface wrong side up. Stretch it with masking tape against that surface.
- Place BATTING on top of backing fabric.
- Place TOP on top of the batting with right side facing up. Smooth away wrinkles using your hands.
- Pin all layers together and baste with basting thread, using long stitches. You can also use safety pins to join the layers.
- Machine or hand quilt starting at the center and working towards the corners. Remember that quilting motifs are a matter of personal preference. Have fun choosing yours!
- After you finished, trim excess of any fabric or batting, squaring the quilt to proceed to bind it.

BINDING

Sew rights sides together.

- Cut enough strips 2½" wide by the width of the fabric **P** to make a final strip 330" long and fold the strip length-wise. Start sewing the binding strip in the middle of one side of the quilt leaving an approximated 5" tail. Sew with ¼" seam allowance (using straight stitch), aligning the strip's raw edge with the quilt top's raw edge.

- Stop stitching ¼" before the edge of the quilt (DIAGRAM B 1). Clip the threads. Remove the quilt from under the machine presser foot. Fold the strip in a motion of 45° and upward, pressing with your fingers (DIAGRAM B2). Hold this fold with your finger, bring the strip down in line with the next edge, making a horizontal fold that aligns with the top edge of the quilt (DIAGRAM B3). Start sewing at ¼" of the border, stitching all the layers. Do the same in the four corners of the quilt.
- Stop stitching before you reach the last 5 or 6 inches. Cut the threads and remove the quilt from under the machine presser foot. Lay the loose ends of the binding flat along the quilt edge, folding the ends back on themselves where they meet. Press them together to form a crease. Using this crease as the stitching line, sew the two open ends of the binding with right sides together (you can help yourself marking with a pencil if the crease is difficult to see).
- Trim seam to ¼" and press open. Complete the sewing. Turn binding to back of the quilt, turn raw edge inside and stitch by hand using blind stitch.



- If you are using our 2.5 edition (binding fabric), click or scan this QR code to see a tutorial on how to use this specialty fabric.



XX

*Congratulations
& enjoy*

XX



artgalleryfabrics.com

NOTE: While all possible care has been taken to ensure the accuracy of this pattern, We are not responsible for printing errors or the way in which individual work varies.

Please read instructions carefully before starting the construction of this quilt. If desired, wash and iron your fabrics before starting to cut.