



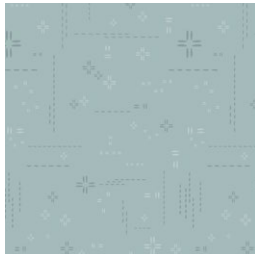
# Vintage MARKET

QUILT DESIGNED BY AGFstudio

## Road to Round Top



FABRICS DESIGNED BY ELIZABETH CHAPPELL



**Fabric A**  
DSE727  
SKYLINE BLUE



**Fabric B**  
RRT14607  
FARM TO MARKET



**Fabric C**  
RRT14604  
MAKE A WISH



**Fabric D**  
PE488  
BLOSSOMED



**Fabric E**  
FE548  
CHALK



**Fabric F**  
RRT14608  
DAY TRIP



**Fabric G**  
RRT14606  
SUMMER BLUSH



**Fabric H**  
RRT14603  
DELICATE BLOSSOMS



**Fabric I**  
RRT14611  
SIMPLY STATED



**Fabric J**  
RRT14600  
FRESHLY GATHERED

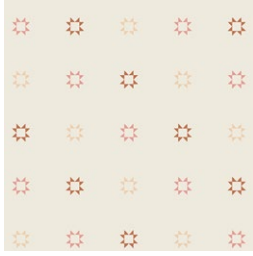


**Fabric K**  
RRT14609  
MODERN VINTAGE



**Fabric L**  
FE550  
SWEET PEACH





**Fabric M**  
RRT14605  
SOUTHERN STARS



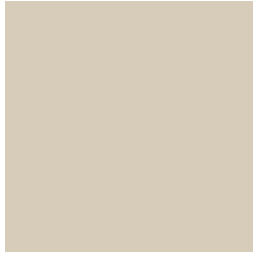
**Fabric N**  
RRT14602  
VILLAGE LANE



**Fabric O**  
RRT14610  
ROADSIDE FIELDS



**Fabric P**  
RRT14601  
HIDDEN GEMS



**Fabric Q**  
PE432  
SANDSTONE

# Vintage MARKET

FINISHED SIZE | 70" x 70"

## FABRIC REQUIREMENTS

Fabric <b>A</b>	DSE717	½ yd.
Fabric <b>B</b>	RRT14607	½ yd.
Fabric <b>C</b>	RRT14604	½ yd.
Fabric <b>D</b>	PE488	½ yd.
Fabric <b>E</b>	FE548	¼ yd.
Fabric <b>F</b>	RRT14608	½ yd.
Fabric <b>G</b>	RRT14606	½ yd.
Fabric <b>H</b>	RRT14603	¼ yd.
Fabric <b>I</b>	RRT14611	¼ yd.
Fabric <b>J</b>	RRT14600	½ yd.
Fabric <b>K</b>	RRT14609	⅞ yd.
Fabric <b>L</b>	FE550	¼ yd.
Fabric <b>M</b>	RRT14605	¼ yd.
Fabric <b>N</b>	RRT14602	¼ yd.
Fabric <b>O</b>	RRT14610	¼ yd.
Fabric <b>P</b>	RRT14601	¼ yd.
Fabric <b>Q</b>	PE432	¼ yd.

### BACKING FABRIC

RRT14606 **G** 4 ½ yds (Suggested)

### BINDING FABRIC

Fabric **K** RRT14609 (Included)

## CUTTING DIRECTIONS

¼" seam allowances are included.  
WOF means width of fabric.

- Seven (7) 7 ⅞" squares from fabric **A**.
- Ten (10) 7 ⅞" squares from fabric **B**.
- Six (6) 7 ⅞" squares from fabric **C**.
- Seven (7) 7 ⅞" squares from fabric **D**.
- Five (5) 7 ⅞" squares from fabric **E**.
- Eight (8) 7 ⅞" squares from fabric **F**.
- Six (6) 7 ⅞" squares from fabric **G**.
- Five (5) 7 ⅞" squares from fabric **H**.
- Five (5) 7 ⅞" squares from fabric **I**.
- Six (6) 7 ⅞" squares from fabric **J**.
- Six (6) 7 ⅞" squares from fabric **K**.
- Five (5) 7 ⅞" squares from fabric **L**.
- Five (5) 7 ⅞" squares from fabric **M**.
- Five (5) 7 ⅞" squares from fabric **N**.
- Five (5) 7 ⅞" squares from fabric **O**.
- Five (5) 7 ⅞" squares from fabric **P**.
- Four (4) 7 ⅞" squares from fabric **Q**.

# CONSTRUCTION

Sew all right sides together with  $\frac{1}{4}$ " seam allowance.

## HST construction

Pair two (2)  $7\frac{7}{8}$ " fabric squares, right sides facing.

Draw a line diagonally corner to corner using a mechanical pencil or frixion pen.

Stitch  $\frac{1}{4}$ " on each side of the drawn lines.

Cut the pieces apart along the marked diagonal line.

Press and trim to a  $7\frac{1}{2}$ " x  $7\frac{1}{2}$ " square.

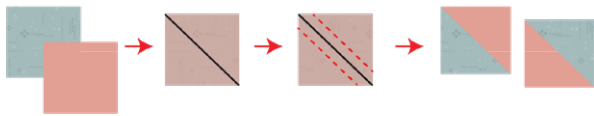


DIAGRAM 1

- Follow the diagram below for each HST assembly:

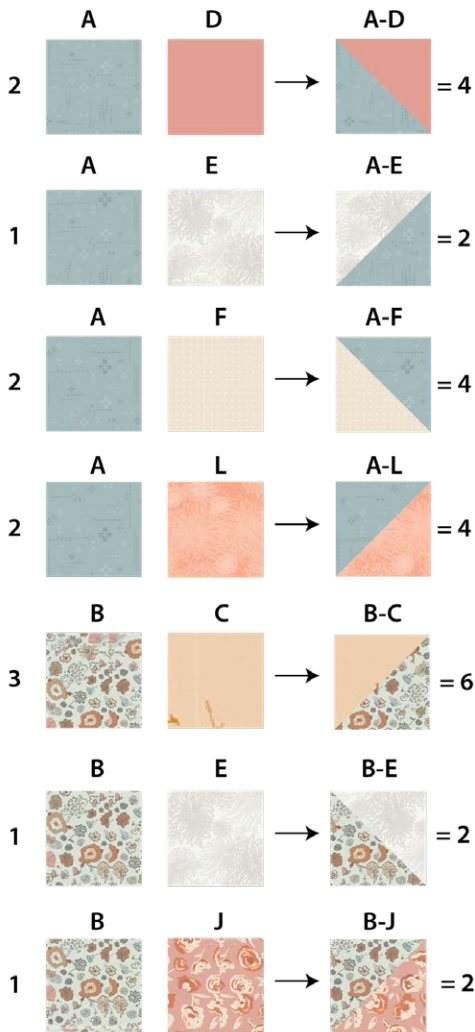


DIAGRAM 2

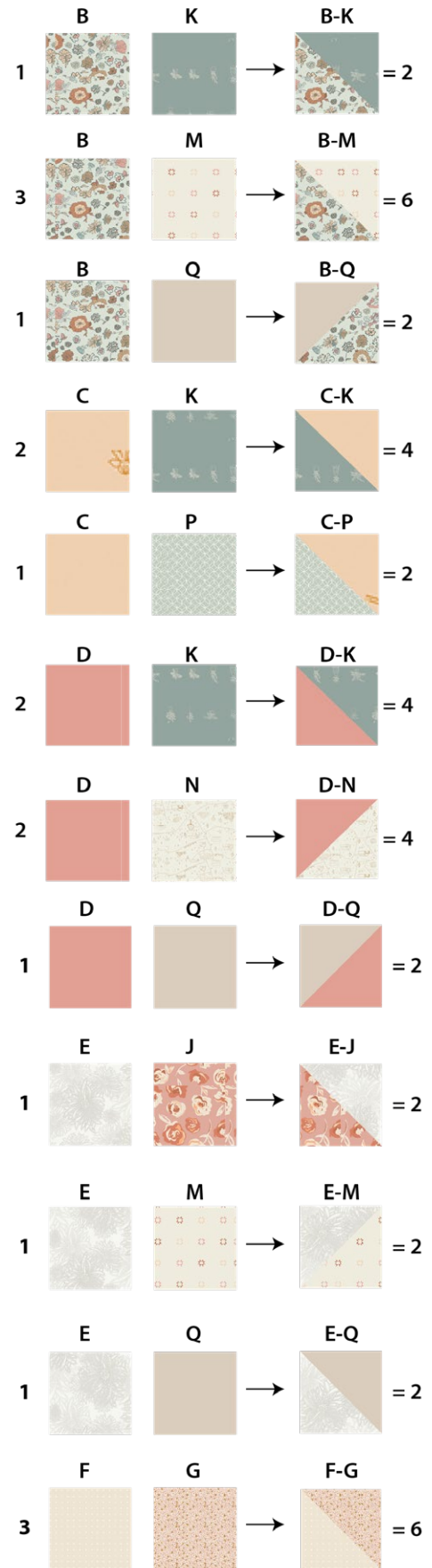


DIAGRAM 3

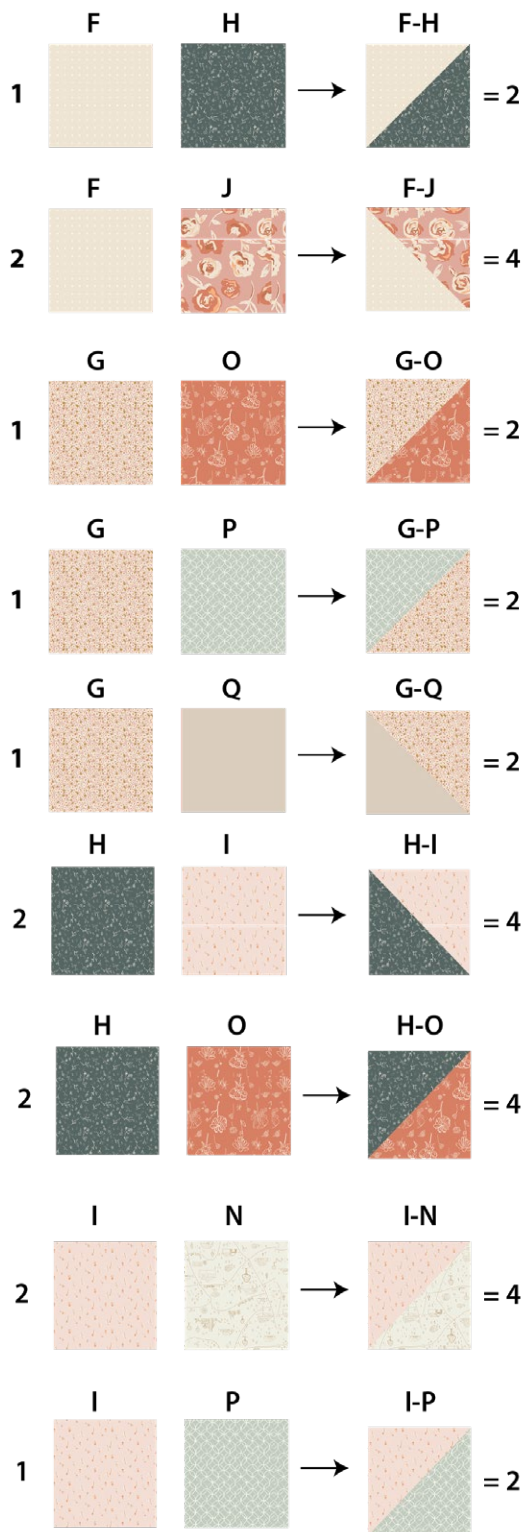


DIAGRAM 4

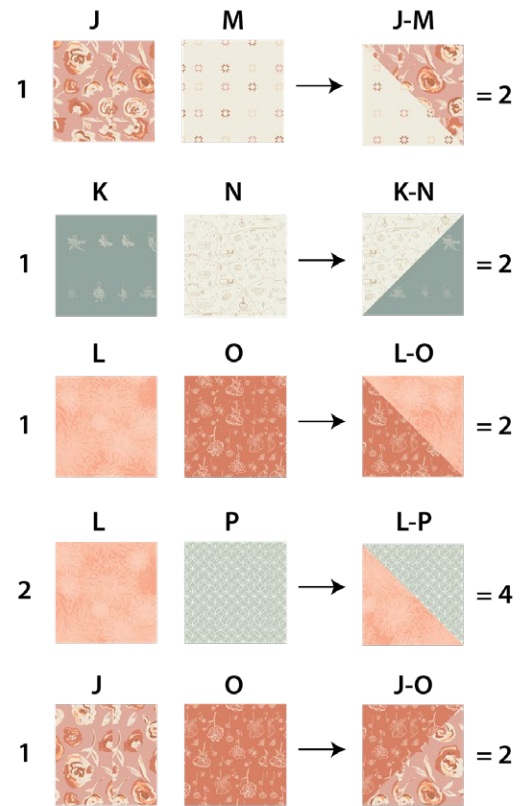


DIAGRAM 5

• To assemble your quilt top, join your HST by rows in the following order:

**Row 1:**

- B-C, A-D, B-E, F-G, H-I, B-J, D-K, A-L, B-M, B-C

**Row 2:**

- D-N, G-P, D-Q, F-H, A-E, I-N, C-K, L-O, J-M, D-N

**Row 3:**

- F-J, K-N, J-O, B-C, L-P, F-G, E-Q, A-D, H-I, F-J

**Row 4:**

- L-P, E-M, A-L, D-N, F-J, B-K, H-O, C-P, G-Q, L-P

**Row 5:**

- A-F, B-Q, I-P, G-O, B-M, B-C, A-F, E-J, D-K, A-F

**Row 6:**

- H-O, D-K, E-J, A-F, B-C, B-M, G-O, I-P, B-Q, H-O

**Row 7:**

- B-M, G-Q, C-P, H-O, B-K, F-J, D-N, A-L, E-M, B-M



## QUILT TOP

- Join the rows from 1-10.
- Use the diagram as a guide to build your quilt top.

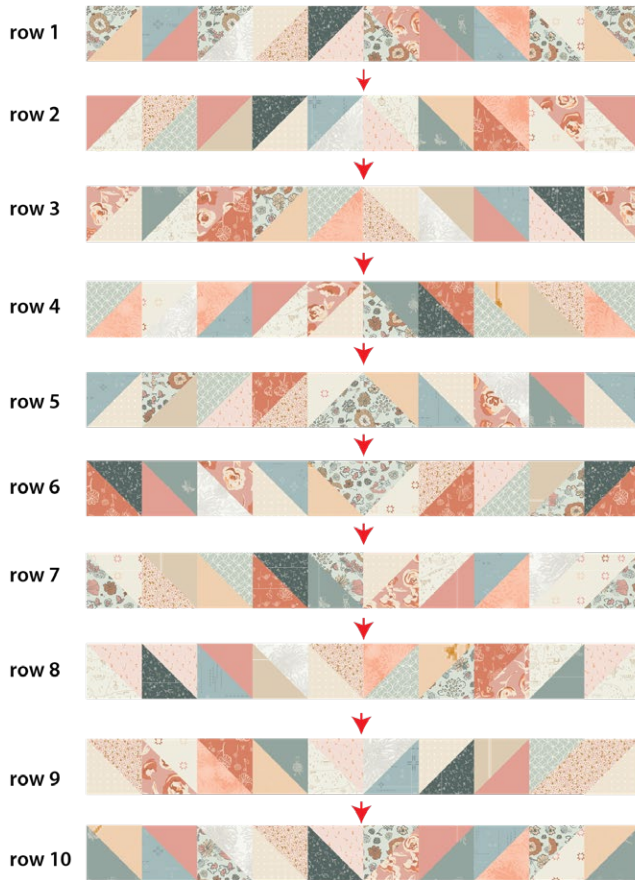


DIAGRAM 7



DIAGRAM 8

## QUILT ASSEMBLY

*Sew right sides together.*

- Place BACKING FABRIC on a large surface wrong side up. Stretch it with masking tape against that surface.
- Place BATTING on top of backing fabric.
- Place TOP on top of the batting with right side facing up. Smooth away wrinkles using your hands.
- Pin all layers together and baste with basting thread, using long stitches. You can also use safety pins to join the layers.
- Machine or hand quilt starting at the center and working towards the corners. Remember that quilting motifs are a matter of personal preference. Have fun choosing yours!
- After you finished, trim excess of any fabric or batting, squaring the quilt to proceed to bind it.

## BINDING

*Sew right sides together.*

- Cut enough strips  $1\frac{1}{2}$ " wide by the width of the fabric **K** to make a final strip 290" long. Start sewing the binding strip in the middle of one of the sides of the quilt, placing the strip right side down and leaving an approximated 5" tail. Sew with  $\frac{1}{4}$ " seam allowance (using straight stitch), aligning the strip's raw edge with the quilt top's raw edge.
- Stop stitching  $\frac{1}{4}$ " before the edge of the quilt (DIAGRAM B 1). Clip the threads. Remove the quilt from under the machine presser foot. Fold the strip in a motion of  $45^\circ$  and upward, pressing with your fingers (DIAGRAM B2). Hold this fold with your finger, bring the strip down in line with the next edge, making a horizontal fold that aligns with the top edge of the quilt (DIAGRAM B3). Start sewing at  $\frac{1}{4}$ " of the border, stitching all the layers. Do the same in the four corners of the quilt.





